



MONOFLO FOR AUTOMATION

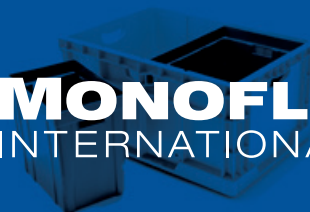
Our experience makes integration seamless.

miworldwide.com

Manufactured in America | 540-771-3077



MONOFLO
INTERNATIONAL



Our unique approach to business is why we're the leader.

For over a decade, Monoflo has been designing, manufacturing and delivering highly specialized containers for automation applications. No other manufacturer offers the product breadth for system integration that Monoflo does. We have millions of units working in automated systems across North America. Most importantly, every product we make—whether it's the first or the one-millionth—is exactly the same, guaranteed.

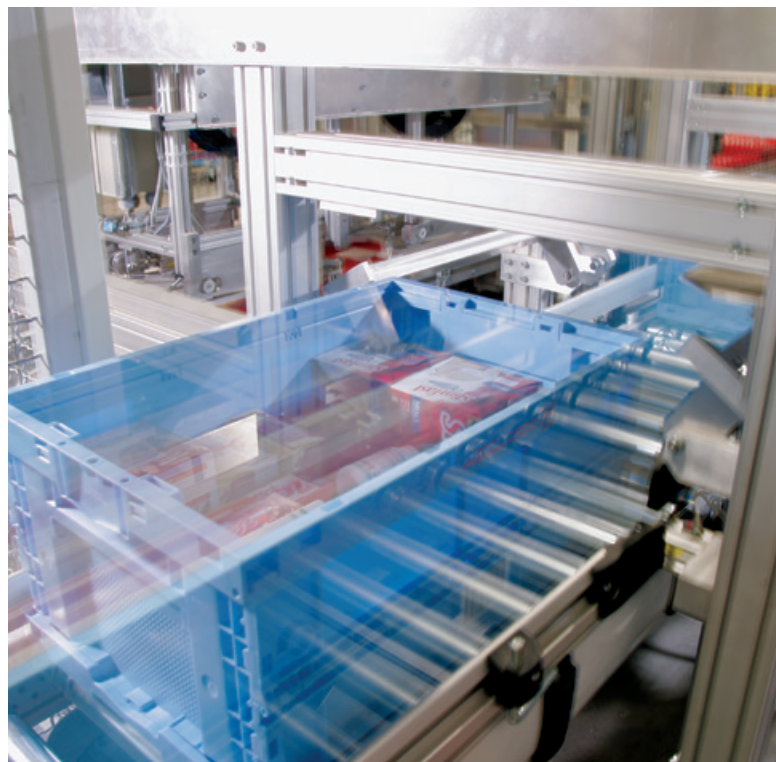
Defining what comes next.

Meeting specifications and achieving optimum performance for your bottom line begins with our innovative manufacturing technologies.

We offer the most efficient, highest performing products for your business. Each of our customers works with an assigned, expert system integration program manager so everyone receives the focused attention needed to enhance the development and implementation of their reusable packaging strategies.

We do it by providing...

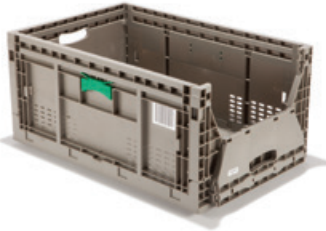
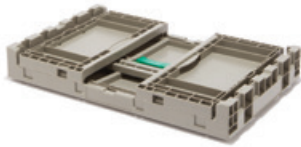
- 1. Responsive service**
- 2. Superior engineering**
- 3. Quality & efficiency**
- 4. Customization**
- 5. Recycling & sustainability**



We'll grow with you.

Given Monoflo's extensive experience with automation, we understand many of the challenges you currently face—in fact, we may already have the product you're looking for. Our expertise expedites innovation. We're set up to help get your container system integrated quickly.

Think of Monoflo as a partner for growth. Clients rely on our experience and perspective for helping to increase their operational and process efficiency.



Foldable Containers

- Many sizes and styles
- Access doors for easy part retrieval
- Freight savings for return freight
- Automation approved for base racking deflection



Stackable Containers

- Standard sizes of 600 x 400mm and 650 x 450mm
- Optional dividers and Mini Tote System (MTS)
- Automation approved for base deflection and easily conveyable



Stack & Nest Containers

- 600 x 400mm footprint
- Efficient nesting ratios for transportation and storage saving



Rackable Pallets

- High pressure, injection molded design
- Rackable up to 2000 lbs
- Lighter weight yields greater strength-to-weight ratio
- Available in FDA approved materials
- 100% recyclable and available in recycled materials

Industry-Leading Innovation: **Stackables with options**

We're always striving to improve on a good thing. Continuous, innovative product improvement and development is an integral part of our culture.

Monolfo's new line of stackable containers are perfectly suited for automated storage and conveyor systems. Each container is loaded with interface points for robotic handling and conveyor system positioning. Many dunnage options, including dividers and our Mini Tote System (MTS) make this product line the easy choice. Key impact areas are engineered to withstand significant impact. Flexible uses, durability and 100% recyclable.

Recessed, ergonomic handles and grips allow for optimal manual handling while not interfering with automation systems.

Flexible dunnage options allow for varying sizes of rigid dividers or our MTS containers.

Enhanced corner lug increases strength when stacking.

Multiple options for Mini Tote System (MTS) inserts add flexibility when customizing.



Ask about our progressive buy-back program. We buy containers once they reach their useful end-of-life.

Durable totes made for automated applications

Stackable Containers

- Ideal for ASRS applications
- Wide range of dunnage options
- Recessed ergonomic carrying handles
- Multiple sizes available
- Three base options available
- Customizable
- Rapid prototyping



SO 6545-325

Recessed, ergonomic handles



SO 6040-325 V

Stack Only Containers

Model	Outside Dimensions			Inside Dimensions			Capacity (lbs)	Weight (lbs)	Volume (cubic feet)	Trailer Qty 53'
	L	W	H	L	W	H				
SO 6040-220 R	23.6	15.8	8.7	22.2	14.4	8.0	80	5.6	1.5	1,800
SO 6040-220 H	23.6	15.8	8.7	22.2	14.4	8.0	80	5.4	1.5	1,800
SO 6040-220 F	23.6	15.8	8.7	22.2	14.4	8.0	45	4.4	1.6	1,800
SO 6040-270 H	23.6	15.8	10.6	22.2	14.4	10.0	77	6.2	2.2	1,500
SO 6040-270 W	23.6	15.8	10.6	22.2	14.4	10.5	110	6.7	2.3	1,500
SO 6040-325 R	23.6	15.8	12.8	22.2	14.4	12.2	80	6.8	2.3	1,200
SO 6040-325 H	23.6	15.8	12.8	22.2	14.4	12.2	80	6.6	2.3	1,200
SO 6040-325 F	23.6	15.8	12.8	22.2	14.4	12.2	45	5.6	2.4	1,200
SO 6040-325 VR	23.6	15.8	12.8	22.2	14.4	12.2	45	6.3	2.3	1,200
SO 6040-325 VH	23.6	15.8	12.8	22.2	14.4	12.2	45	6.1	2.3	1,200
SO 6040-325 VF	23.6	15.8	12.8	22.2	14.4	12.2	45	5.1	2.4	1,200
SO 6340-380 R	25.0	15.8	15.0	23.4	14.3	14.4	80	7.6	2.8	945
SO 6545-325 R	25.6	17.7	12.8	23.9	16.0	12.3	65	7.8	2.7	1000
SO 6545-325 RHD	25.6	17.7	12.8	23.9	16.0	12.2	90	8.3	2.7	1000
SO 6545-325 F	25.6	17.7	12.8	23.9	16.0	12.8	45	7.2	2.8	1000
SO 6545-440 R	25.6	17.7	17.3	23.9	16.0	16.9	65	9.3	3.7	750
SO 6545-440 RHD	25.6	17.7	17.3	23.9	16.0	16.7	90	9.9	3.7	750
SO 6545-440 F	25.6	17.7	17.3	23.9	16.0	17.4	45	8.8	3.8	750

"R" denotes Ribbed Bottom, "H" denotes Hybrid Bottom, "F" denotes Flat Bottom, "HD" denotes Heavy Duty. "V" denotes Vented Side Walls. SO6040 container sizes are available with Vented Side Walls

Mini Tote System (MTS)

Model	Outside Dimensions			Trailer Qty 53'
	L	W	H	
MTS S-H295	7.9	5.9	11.6	13,650
MTS M-H295	11.8	7.9	11.6	6,240
MTS L-H295	15.8	11.8	11.6	3,510



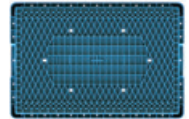
SO 6545-325 with Mini Tote System (MTS) option



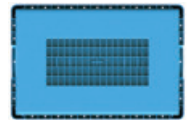
Dividers lock in place

SO 6040-325

Stack Only container bottom options



Ribbed (R)



Hybrid (H)



Flat (F)

Engineered to exacting specifications.
Repeatable process. Every time.

Automation Trays

- Largest supplier for system integration in North America
- Engineered to exacting specifications
- Ideal for AS/RS systems
- Customizable
- Rapid prototyping
- Reliable process yields repeatable quality



AS/RS 350x500

Trays

Model	Outside Dimensions			Inside Dimensions			Stack Height	Weight (lbs)	Volume (cubic feet)	Trailer Qty 53'
	Top			Top						
	L	W	H	L	W	H				
AS/RS 350x500	19.7	13.8	1.9	18.9	13.0	1.0	1.1	2.0	0.1	14,940
AS/RS 500x700	27.6	19.7	1.9	27.6	19.7	1.9	1.1	3.7	0.3	7,470

Simple gets the job done.

Stack & Nest Containers

- Generously sized and ergonomic handles for easy and safe lifting
- Angled label fields ensure accurate label scanning
- Top rail bumpers increase impact resistance
- Textured bottom pattern for enhanced grip during conveyance



SN 6040-270 stacked



SN 6040-270 nested

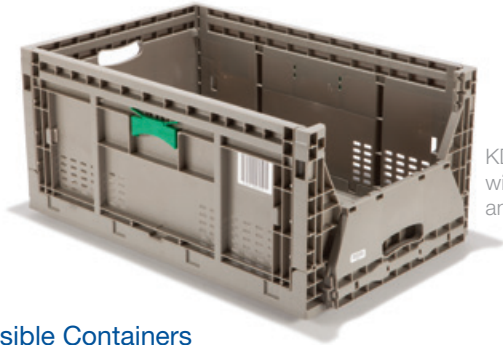
Stack & Nest Containers

Model	Outside Dimensions				Inside Dimensions				Overall Height	Usable Inside Height	Weight (lbs)	Trailer Qty 53'
	Top		Bottom		Top		Bottom					
	L	W	L	W	L	W	L	W				
SN 6040-270	23.6	15.7	21.6	13.7	20.3	14.4	19.4	13.5	10.7	9.8	3.9	3,300

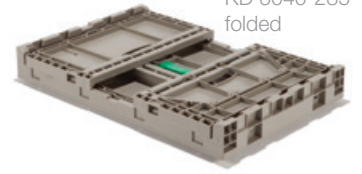
Strong and secure. Flexible use.

Foldable Containers

- Foldable tote knock down ratios as high as 5:1
- Optional lids offer increased protection for contents
- Multiple labeling areas
- Available with vented or solid side walls
- Compatible with standard 48" x 40" pallets
- 100% recyclable



KD 6040-285 with vented side walls and open access door



KD 6040-285 folded



KD 6040-285 with lid

Collapsible Containers

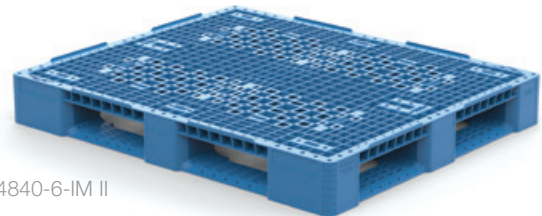
Model	Outside Dimensions			Inside Dimensions			Stack Height	Folded Height	Weight (lbs)	Volume (cubic feet)	Trailer Qty 53'
	L	W	H	L	W	H					
KD 6040-285	23.6	15.8	11.2	22.3	14.4	10.8	10.8	2.8	6.8	2.0	5,250
KD containers are foldable from the long sides with latches and sidewalls connected to the base.											
RC 6040-285 V	23.7	15.7	11.2	21.2	14.4	10.2	10.8	3.3	7.2	1.8	4,800
RC containers are foldable from the short sides with two latches to lock in place. Long sidewalls connect to the top collar. "V" denotes vented side walls.											
RC 6040-285	23.7	15.7	11.2	21.3	14.4	10.2	10.8	3.3	7.3	1.8	4,800

RC containers are foldable from the short sides without needing latches. Long sidewalls connect to the top collar.

Rugged and Rackable.

Pallet Systems

- Injection molded
- Designed for easy cleaning and sanitary applications
- Strong and rugged with racking capacities
- Available in FDA and USDA approved materials
- Sustainable—made with recyclable materials
- Buy-back pallet programs available



RP 4840-6-IM II

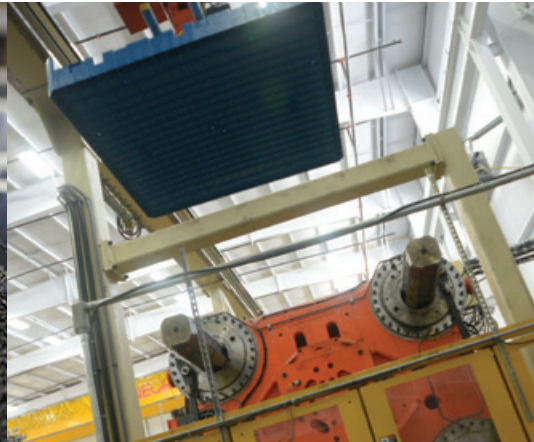
Rackable Pallets

Model	Entry	Material	Outside Dimensions (inches)			Pallet Weight	Static Load (lbs)	Dynamic Load (lbs)	Edge Rack Load (lbs)	Stack Qty	Trailer Qty 53'
			L	W	H						
RP 4840-6-IM I	4-Way	PE	48.0	40.0	6.0	47.1	30,000	4,000	1,900	18	540
RP 4840-6-IM II	4-Way	PP	48.0	40.0	6.0	46.5	30,000	4,000	2,200	18	540

Edge Rack Load ratings are affected by type and width of support for pallet on the short side.

IF YOU DON'T SEE EXACTLY WHAT YOU NEED, TALK TO US. CUSTOMIZING YOUR PERFECT CONTAINER IS AN IMPORTANT PART OF OUR UNIQUE APPROACH.

Choosing the right path.



Sustainability is good business—good for the environment, good for your bottom line.

More than moving products from manufacturing to retail at the lowest cost and improving delivery quality of the primary package, Monoflo believes that making smarter operational choices that help the environment also help your bottom line.



Through superior engineering, Monoflo is able to reduce the secondary package weight for our customers by hundreds of pounds per truckload. This results in annual reductions of millions of pounds of freight hauled each year, which in turn requires less fuel to move. At the same time, the design of the products we produce ensures they will continue to perform through extended product lifecycles.

As part of our continuing commitment to environmental practices, Monoflo has a dedicated team whose sole responsibility is to buy back containers that have reached their end of life. These containers are grinded and re-pelletized on-site. The resulting materials are used in making superior-quality, recycled containers.

But, sustainable business is not simply recycling and green practices, it's hiring and retaining the best people. It's investing in technologies that ensure the products we manufacture will have a longer product lifecycle and will perform for our customers time after time, order after order.



Proudly manufactured in America.

Through Monoflo's manufacturing facilities in Virginia and Kansas, we're creating manufacturing jobs in America and fostering domestic economic growth.

Manufacturing in America makes a statement that runs deep through our communities. For four decades and counting, our employees continue to exemplify the values associated with hard work, ingenuity and tradition.

Monoflo_SystemInt_Bro_SinglePgs_092723

MONOFLO
INTERNATIONAL

miworldwide.com

Manufactured in America | 540-771-3077