

MONOFLO FOR DISTRIBUTION

**Our products
move the products
people need everyday.**

miworldwide.com

Manufactured in America | 540-771-3077



Our unique approach to business is why we're the leader.

Monoflo designs, manufactures and ships more distribution containers than any other company in America.

Defining what comes next.

Achieving optimum performance for your bottom line begins with our innovative manufacturing technologies.

We offer the most efficient, highest performing products for your business. Each of our customers works with an assigned, expert distribution industry manager so everyone receives the focused attention needed to enhance the development and implementation of their reusable packaging strategies.

We do it by providing...

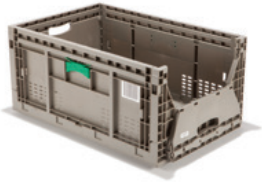
- 1. Responsive service**
- 2. Superior engineering**
- 3. Product customization**
- 4. High-quality manufacturing**
- 5. Recycling & sustainability solutions**



We'll grow with you.

With automation becoming the standard, the distribution marketplace continues to evolve. Think of Monoflo as a partner for growth. Clients rely on our experience in warehouse automation and our perspective for helping to increase their operational efficiency.

Monoflo product innovations not only make automation possible, they also can increase re-stocking efficiency, lower shipping costs, save fuel, maximize return ratios and contribute to a safer work environment.



Foldable Containers

- Many sizes and styles
- Access doors for easy part retrieval
- Freight savings for return freight
- Automation approved for base racking deflection



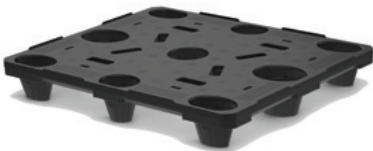
Stackable Containers

- Standard sizes of 600 x 400mm and 650 x 450mm
- Optional dividers and Mini Tote System (MTS)
- Automation approved for base deflection and easily conveyable



Stack & Nest Containers

- 600 x 400mm footprint
- Efficient nesting ratios for transportation and storage saving



Pallet Systems

- Unique welded construction
- Lighter weight yields greater strength-to-weight ratio
- High-pressure injection molded design
- 100% recyclable and available in recycled materials



Bulk Containers

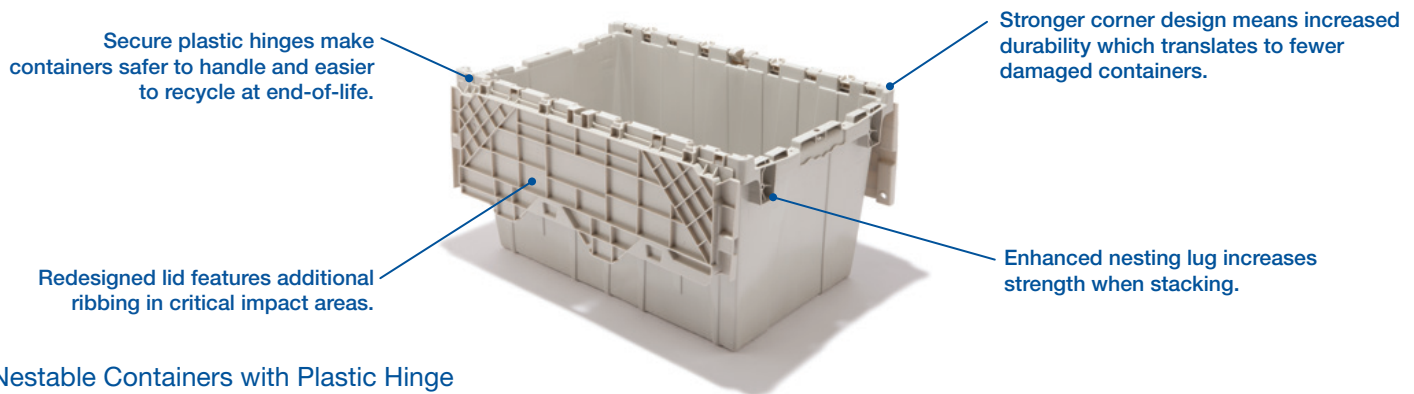
- High-pressure injection molded design
- Two-piece welded base
- Best-in-class strength to weight ratio
- 100% recyclable and available in recycled materials

Industry-leading innovation.

Attached Lid Nestable Containers

We're always striving to improve on a good thing. Continuous, innovative product improvement and development is an integral part of our culture.

Monoflo's distribution containers have redefined the industry standard and our automated manufacturing processes makes every product more cost-effective. Our containers are loaded with features to make them an easy choice. The all-plastic design eliminates hazardous metal hinge pins, making them safer throughout your supply chain. We also have reinforced several key impact areas, including the corner bumper to protect the hinge line. Monoflo distribution containers are stronger, more durable and 100% recyclable.



Nestable Containers with Plastic Hinge

Model	Outside Dimensions (inches)				Inside Dimensions (inches)				Total Container Height (inches)	Product Clearance (inches)	Weight (lbs)	Volume (cubic feet)	Trailer Qty 53'
	Top		Bottom		Top		Bottom						
	L	W	L	W	L	W	L	W					
DC 2012-07 SP	19.6	11.6	17.1	9.3	17.7	9.9	16.5	8.7	7.3	6.2	3.1	0.5	7,200
DC 2115-09 SP	21.9	15.3	19.2	13.3	20.1	14.3	18.9	12.0	9.7	8.2	4.7	1.3	4,680
DC 2115-12 SP	21.9	15.2	18.9	12.7	19.7	14.0	18.0	12.2	12.8	11.0	5.4	1.7	3,840
DC 2115-12 HP	21.9	15.5	18.6	12.8	19.8	14.1	18.1	12.4	12.8	11.2	6.1	1.7	4,352
DC 2115-17 HP	21.9	15.2	18.6	13.0	20.1	14.3	18.4	12.8	17.2	15.8	7.7	2.3	3,456
DC 2213-12 SP	22.3	13.0	18.9	10.9	20.0	11.3	18.7	10.1	13.4	11.8	5.2	1.5	4,480
DC 2515-14 SP	25.3	16.3	22.0	13.3	23.3	14.5	21.6	12.8	13.9	12.2	7.2	2.2	2,600
DC 2717-12 SP	27.3	17.2	24.4	14.6	25.2	15.5	23.7	13.9	12.6	11.0	7.7	2.5	3,536
DC 2820-15 HP	28.1	20.8	25.8	18.8	26.0	19.0	25.0	18.0	15.6	14.0	13.2	3.8	1,320
DC 3914-12 HP	39.4	14.3	36.9	11.4	37.5	12.4	36.2	10.7	39.4	11.0	13.2	3.3	2,496

Nestable Containers with Metal Hinge

DC 1813-15 SM*	17.4	12.9	14.4	10.9	15.2	11.8	14.0	10.5	13.6	13.5	5.8	1.3	4,416
DC 1813-15 HM*	17.4	12.9	14.4	10.9	15.2	11.8	14.0	10.5	13.6	13.5	6.1	1.3	4,416
DC 2420-12 SM*	23.8	19.2	21.4	17.4	22.3	18.1	20.5	16.5	12.5	11.0	7.7	2.4	2,880

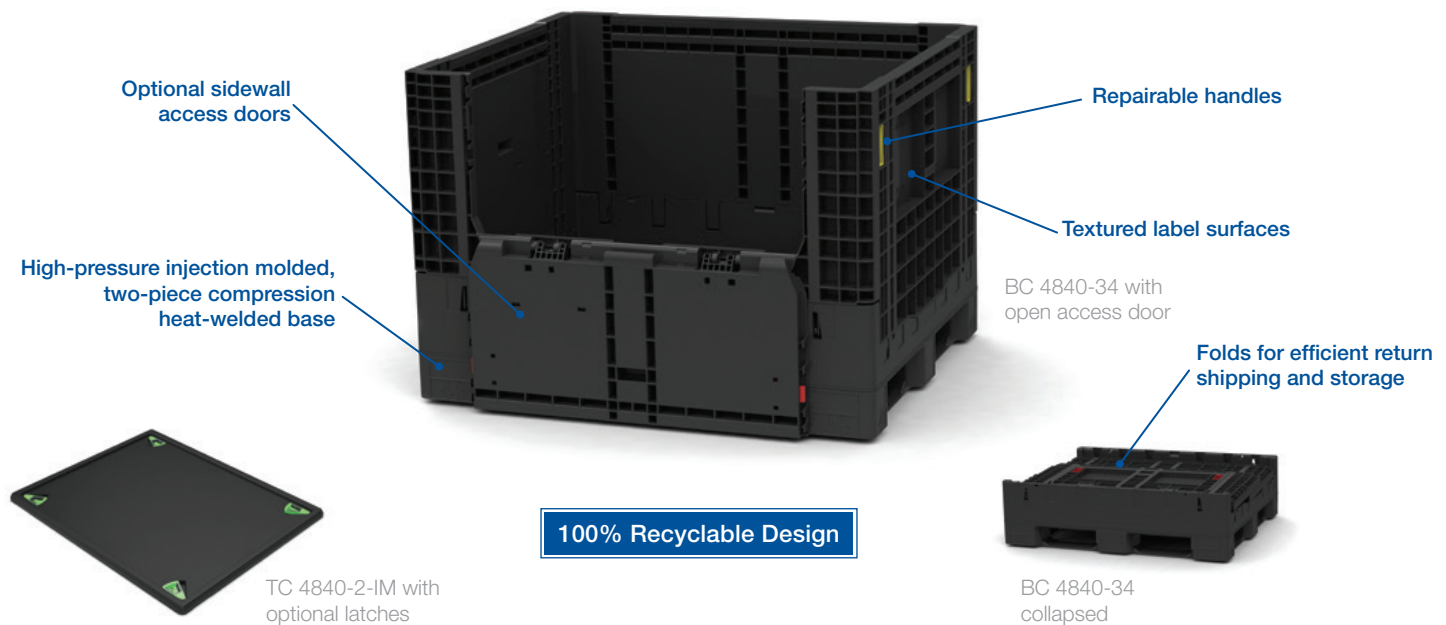
Dolly 2818 (for use with DC 2717-12 and comes standard with 4" casters)	28.5	18.5	N/A	N/A	N/A	N/A	N/A	N/A	6.5	N/A	13.0	N/A	900
---	------	------	-----	-----	-----	-----	-----	-----	-----	-----	------	-----	-----

Dolly 2818 (for use with DC 2717-12 and ships without casters)	28.5	18.5	N/A	N/A	N/A	N/A	N/A	N/A	6.5	N/A	5.0	N/A	1,716
--	------	------	-----	-----	-----	-----	-----	-----	-----	-----	-----	-----	-------

Made for Distribution.

Bulk Containers

With over one million bulk containers manufactured to date, Monoflo sets the industry standard by outperforming the competition. Our unique combination of the latest high-pressure injection molding technology and a proven hot-plate welding process delivers the best strength-to-weight ratio in the business, while our automated manufacturing processes allow us to offer it at the lowest cost in the marketplace. Engineered for more durability, highly-efficient stacking, and customizable with access doors, sidewall label and cardholder options, and RFID tagging—we have the right bulk container to fit your specific application.



Bulk Containers

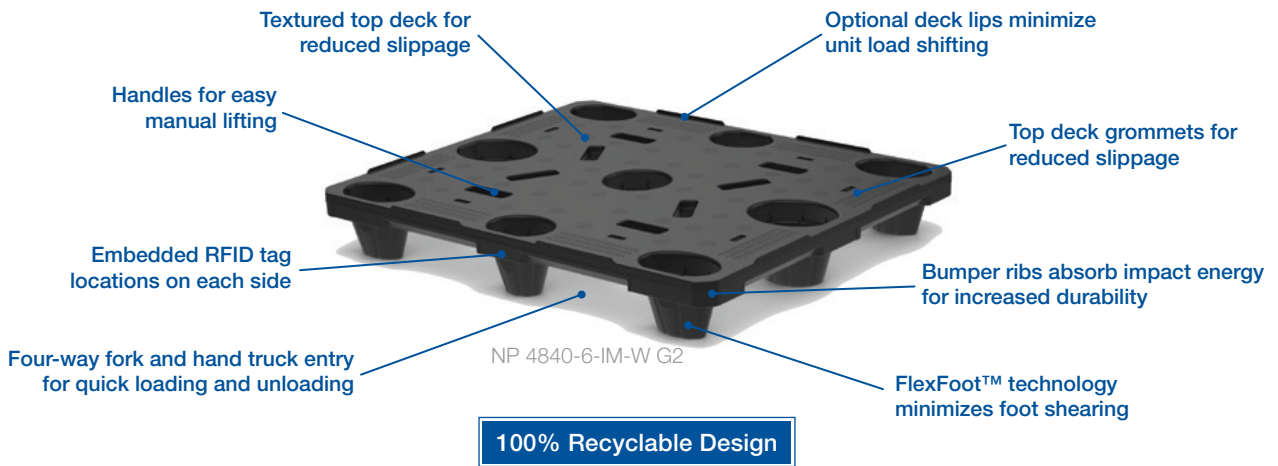
Model	Outside Dimensions (inches)			Inside Dimensions (inches)			To Fill Line (inches)	Height Collapsed (inches)	Weight (lbs)	Volume (cubic feet)	Trailer Qty Opened	Trailer Qty Collapsed
	L	W	H	L	W	H						
BC 4840-34	48.0	40.0	34.0	45	37	27.9	27.3	13.6	106.2	26.3	90	240
BC 4840-39	48.0	40.0	39.0	45	37	32.9	32.3	13.6	116.0	31.1	60	240
TC 4840-2-IM*	48.5	40.5	1.4	N/A	N/A	N/A	N/A	N/A	11.7	N/A	N/A	3,540

*Latching Top Cap is also available. Ask your Monoflo sale representative about all available options.

Pallet Systems

Monoflo’s high-pressure injection molded pallets are engineered to withstand the rigors of any application, from blast freezer edge racking to general distribution and storage. Our pallets are engineered to be more durable yet lighter, saving you money and outlasting the competition. We offer a versatile line of rackable and nestable pallets with customizable features including molded-in logos, hot stamping, and RFID capability for superior lot traceability.

We leverage decades of expertise in superior design, engineering, and production to make products that will perform brilliantly in your specific application.



Nestable Pallets

Model	Entry	Material	Outside Dimensions (inches)			Pallet Weight	Static Load (lbs)	Dynamic Load (lbs)	Stack Qty	Trailer Qty 53'
			L	W	H					
NP 4840-6-IM-W G2	4-Way	PE	48.0	40.0	6.5	25.0	10,000	3,000	42	1,260
NP 4840-6-IM	4-Way	PE	48.0	40.0	5.8	22.5	10,000	1,800	43	1,290
NP 3042-6-IM	4-Way	PE	29.0	42.0	5.9	20.0	10,000	2,000	39	1,755
NP 1210-125-IM	4-Way	PE	47.5	39.4	4.9	22.0	10,000	1,800	25 (2 stacks)	1,500

Static and Dynamic Load maximum ratings are affected by type and distribution of load.



Rackable Pallets

Model	Entry	Material	Outside Dimensions (inches)			Pallet Weight	Static Load (lbs)	Dynamic Load (lbs)	Edge Rack Load (lbs)	Stack Qty	Trailer Qty 53'
			L	W	H						
RP 4840-6-IM I	4-Way	PE	48.0	40.0	6.0	47.1	30,000	4,000	1,900	18	540
RP 4840-6-IM II	4-Way	PP	48.0	40.0	6.0	46.5	30,000	4,000	2,200	18	540
RP 3737-6-IM	4-Way	PE	37.0	37.0	6.0	37.6	30,000	4,000	N/A	17	544

Edge Rack Load ratings are affected by type and width of support for pallet on the short side.

Repeatable process. Every time.

Automation Products

- Largest supplier for system integration in North America
- Engineered to exacting specifications
- Ideal for AS/RS systems
- Customizable
- Rapid prototyping
- Reliable process yields repeatable quality



SO6040-380



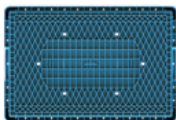
SO6040-380
with Mini Tote System
(MTS) option

Stack Only Containers

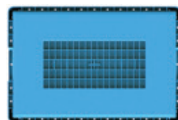
Model	Outside Dimensions			Inside Dimensions			Capacity (lbs)	Weight (lbs)	Volume (cubic feet)	Trailer Qty 53'
	L	W	H	L	W	H				
SO 6040-220 R	23.6	15.8	8.7	22.2	14.4	8.0	80	5.6	1.5	1,800
SO 6040-220 H	23.6	15.8	8.7	22.2	14.4	8.0	80	5.4	1.5	1,800
SO 6040-220 F	23.6	15.8	8.7	22.2	14.4	8.0	45	4.4	1.6	1,800
SO 6040-270 H	23.6	15.8	10.6	22.2	14.4	10.0	77	6.2	2.2	1,500
SO 6040-270 W	23.6	15.8	10.6	22.2	14.4	10.5	110	6.7	2.3	1,500
SO 6040-325 R	23.6	15.8	12.8	22.2	14.4	12.2	80	6.8	2.3	1,200
SO 6040-325 H	23.6	15.8	12.8	22.2	14.4	12.2	80	6.6	2.3	1,200
SO 6040-325 F	23.6	15.8	12.8	22.2	14.4	12.2	45	5.6	2.4	1,200
SO 6040-325 VR	23.6	15.8	12.8	22.2	14.4	12.2	45	6.3	2.3	1,200
SO 6040-325 VH	23.6	15.8	12.8	22.2	14.4	12.2	45	6.1	2.3	1,200
SO 6040-325 VF	23.6	15.8	12.8	22.2	14.4	12.2	45	5.1	2.4	1,200
SO 6340-380 R	25.0	15.8	15.0	23.4	14.3	14.4	80	7.6	2.8	945
SO 6545-325 R	25.6	17.7	12.8	23.9	16.0	12.3	65	7.8	2.7	1000
SO 6545-325 RHD	25.6	17.7	12.8	23.9	16.0	12.2	90	8.3	2.7	1000
SO 6545-325 F	25.6	17.7	12.8	23.9	16.0	12.8	45	7.2	2.8	1000
SO 6545-440 R	25.6	17.7	17.3	23.9	16.0	16.9	65	9.3	3.7	750
SO 6545-440 RHD	25.6	17.7	17.3	23.9	16.0	16.7	90	9.9	3.7	750
SO 6545-440 F	25.6	17.7	17.3	23.9	16.0	17.4	45	8.8	3.8	750

"R" denotes Ribbed Bottom, "H" denotes Hybrid Bottom, "F" denotes Flat Bottom, "HD" denotes Heavy Duty.
"V" denotes Vented Side Walls. SO6040 container sizes are available with Vented Side Walls

Stack Only Container bottom options:



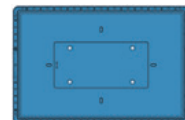
Ribbed (R)



Hybrid (H)



Flat (F)



Welded (W)

Customized to exacting specifications.

More Automation Products



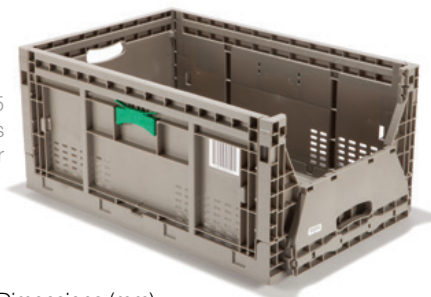
SN6040-270
nested



SN6040-270
stacked

Stack & Nest Containers

Model	Outside Dimensions (mm)				Inside Dimensions (mm)				Overall Height (mm)	Usable Inside Height (mm)	Weight (lbs)	Trailer Qty 53'
	Top		Bottom		Top		Bottom					
	L	W	L	W	L	W	L	W				
SN6040-270	599	399	548	347	515	366	492	342	270	245	3.9	3,300



KD6040-285
with vented side walls
and open access door

Collapsible Containers

Model	Outside Dimensions (mm)			Inside Dimensions (mm)			Stack Height (mm)	Folded Height (mm)	Weight (lbs - PP)	Volume (cubic feet)	Trailer Qty 53'	
	Top			Top								
	L	W	H	L	W	H						
KD6040-285 R	600	400	285	566	366	269	275	82	6.8	2.0	5,250	
KD 6040-285 H	600	400	285	566	366	269	275	82	6.5	2.0	5,250	
KD containers are foldable from the long sides with latches and sidewalls connected to the base.												
RC6040-285 V	598	398	285	542	363	270	273	85	7.2	1.9	4,800	
RC containers are foldable from the short sides with two latches to lock in place. Long sidewalls connect to the top collar.												
RC6040-285	600	400	285	542	363	270	273	85	7.3	1.9	4,800	

RC containers are foldable from the short sides without needing latches. Long sidewalls connect to the top collar.

"R" denotes Ribbed Bottom. "H" denotes Hybrid Bottom. "V" denotes vented side walls.



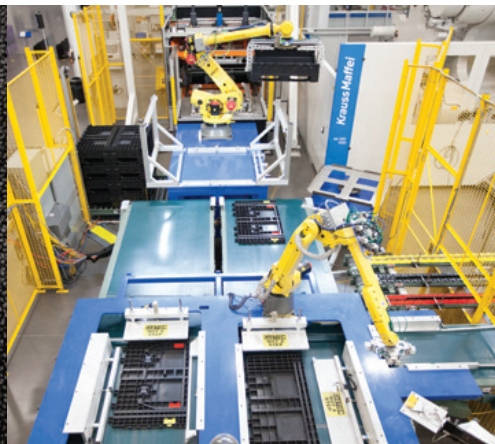
AS/RS 350x500

Trays

Model	Outside Dimensions (mm)			Inside Dimensions (mm)			Stack Height (mm)	Nest Height	Weight (lbs)	Volume (cubic feet)	Trailer Qty 53'
	Top			Top							
	L	W	H	L	W	H					
AS/RS 350x500	499	349	48	481	331	24.5	27	2.0	0.14	0.1	14,940
AS/RS 500x700	699	499	48	681	481	24.5	27	3.7	0.28	0.3	7,470

**TALK TO US ABOUT CUSTOMIZING YOUR PERFECT CONTAINER.
IT'S AN IMPORTANT PART OF OUR UNIQUE APPROACH.**

Choosing the right path.



Sustainability is good business—good for the environment, good for your bottom line.

More than moving products from manufacturing to retail at the lowest cost and improving delivery quality of the primary package, Monoflo believes that making smarter operational choices that help the environment also help your bottom line.



Through superior engineering, Monoflo is able to reduce the secondary package weight for our customers by hundreds of pounds per truckload. This results in annual reductions of millions of pounds of freight hauled each year, which in turn requires less fuel to move. At the same time, the design of the products we produce ensures they will continue to perform through extended product life cycles.

As part of our continuing commitment to environmental practices, Monoflo has a dedicated team whose sole responsibility is to buy back containers that have reached their end of life. To maintain the highest levels of quality control, these containers are ground and re-pelletized on-site. The resulting materials are used in making superior-quality, recycled containers.

Sustainable business is not simply recycling and green practices, it's hiring and retaining the best people. It's investing in technologies that ensure the products we manufacture will have a longer product life cycle and will perform for our customers time after time, order after order.

Ask about our progressive buy-back program. We buy containers once they reach their useful end-of-life.



Proudly made right here.

Through Monoflo's manufacturing facilities in Virginia and Kansas, we're creating manufacturing jobs in America and fostering domestic economic growth.

Manufacturing in America makes a statement that runs deep through our communities. For four decades and counting, our employees continue to exemplify the values associated with hard work, ingenuity and tradition.

REUSABLE PACKAGING REDEFINED



miworldwide.com

Manufactured in America | 540-771-3077